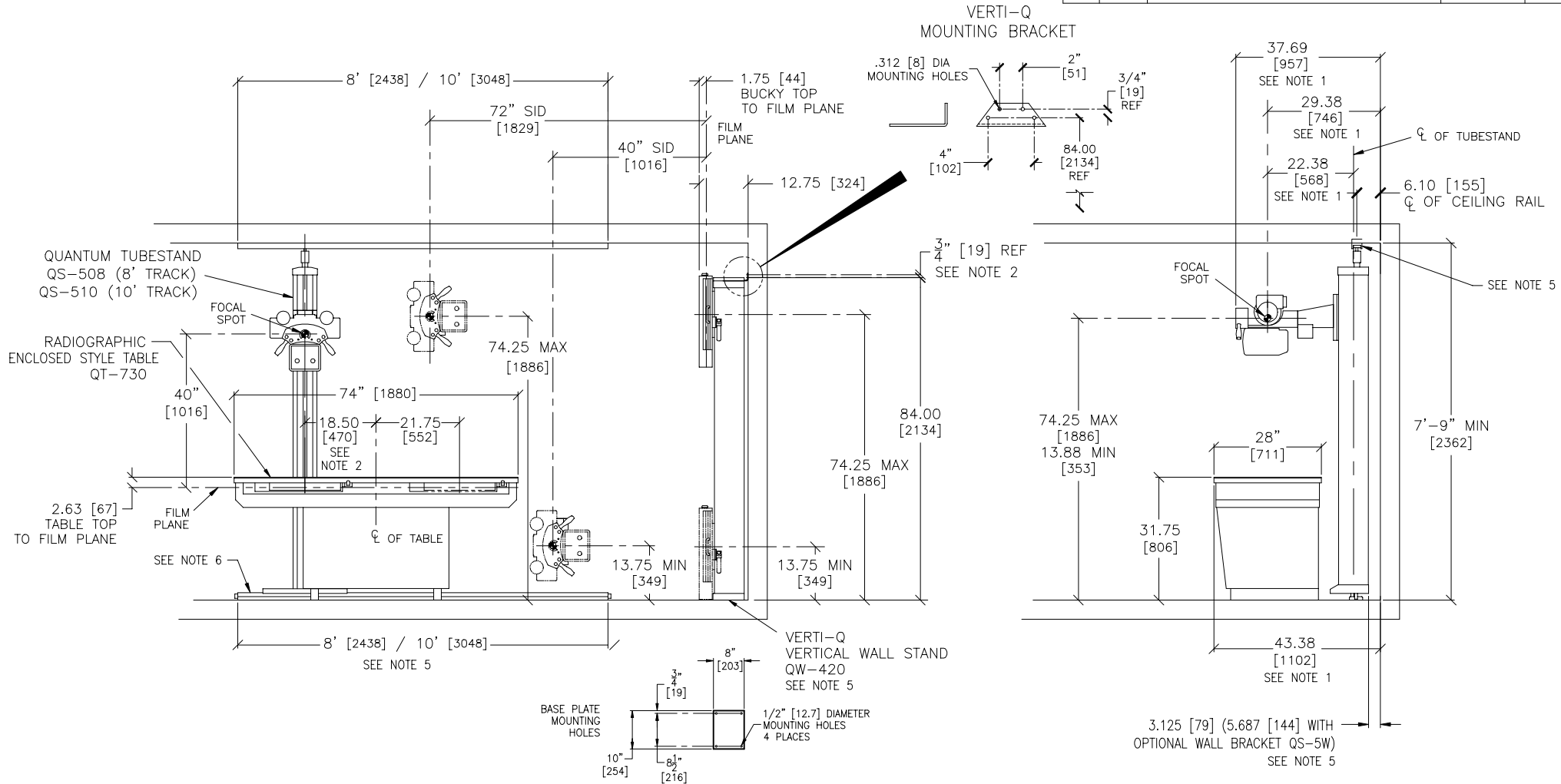


REVISIONS				
REV	ECN	DESCRIPTION	DATE	DRN BY:
A		RELEASED	9-28-00	DW
B		ADDED MOUNTING INFORMATION.	3-9-01	DW
C		ADDED DIMENSION.	6-12-01	DW



NOTES:

1. ADD 8" [203] FOR OPTIONAL LONGER EXTENSION PIECE.
2. THIS DIMENSION BECOMES 21.75 [552] WITH GRID CABINET.
3. RECEPTOR TRAVEL EXTENTS ON QT-710 & QT-720 IS 20.37 [517] FROM C/L OF TABLE TO C/L OF GRID CABINET.
4. MOBILE RADIOGRAPHIC TABLE (QT-710) & RADIOGRAPHIC OPEN STYLE TABLE (QT-720) DIMENSIONED IDENTICALLY TO QT-730 SHOWN EXCEPT NOTE 3 (ABOVE).
5. MOUNTING POINTS MUST WITHSTAND APPROX. 100 LBS [45.36 kg] PULL.
6. BASE TRACK MUST WITHSTAND 200 LBS [90.72 kg] PULL.

PROPRIETARY

THIS DOCUMENT EMBODIES PROPRIETARY RIGHTS OF QMI LLC. IT IS FURNISHED FOR REFERENCE ONLY. ALL OTHER USE IS PROHIBITED.

DRAWN BY DON WHITE	DATE 9-28-00	Quantum Medical Imaging, LLC		
CHECKED BY				
ENG APPROVAL		TITLE RAD-X SYSTEM		
QA APPROVAL				
MFG APPROVAL		MODEL NOS. QS-508; QT-730; QW-420	DWG/PART NO DC80-001	REV C
MFG APPROVAL		SCALE NOT TO SCALE DWG CAT DOCUMENTATION		SHEET 1 OF 1