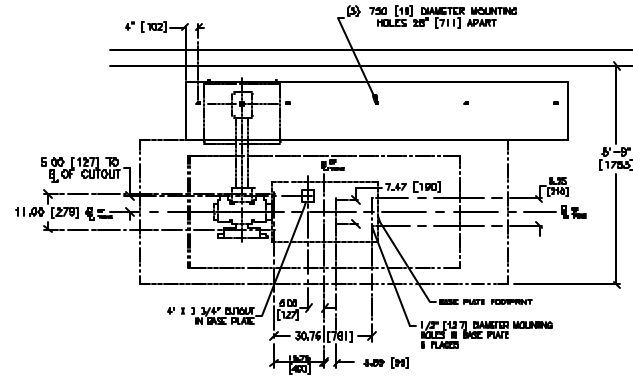
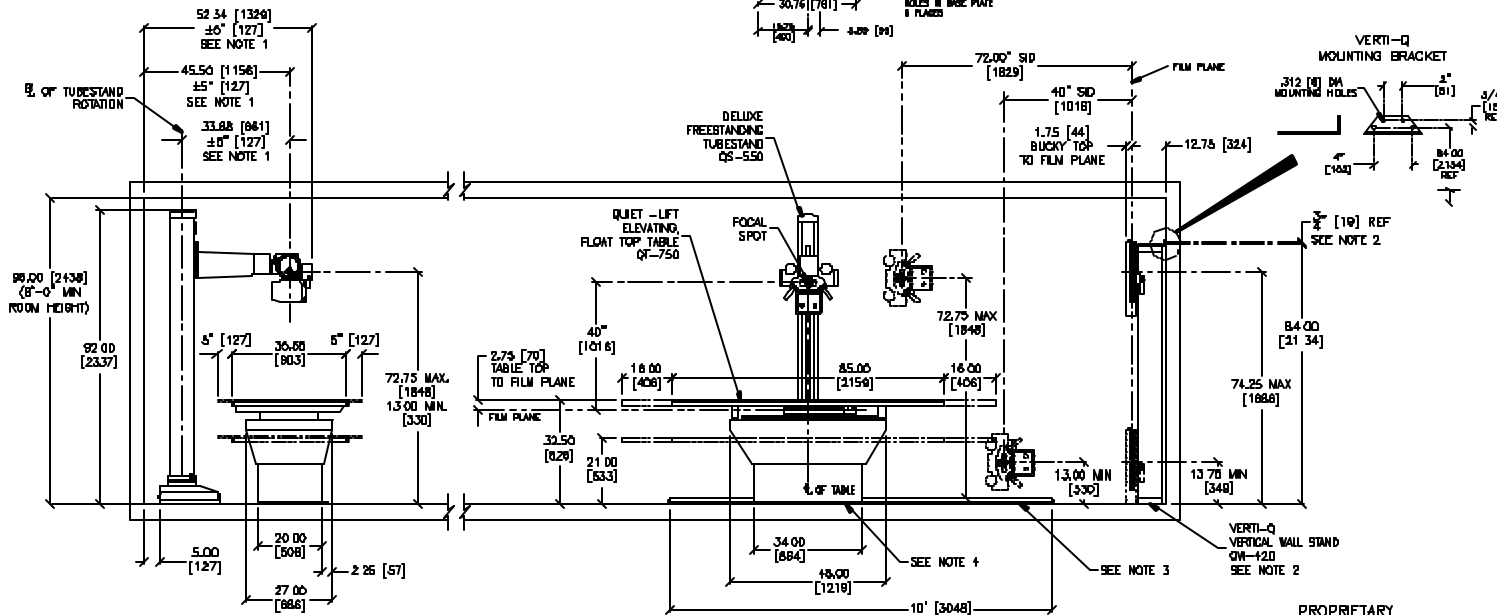


FOR OPTIMAL PRINTING RESULTS
SET "PEN ASSIGNMENTS" IN "PRINT/PLOT"
DIALOG BOX AS FOLLOWS.

COLOR	PEN NO	PEN WIDTH
1 (RED)	7	022
2 (YEL)	7	011
3 (GRN)	7	003
7 (WHT)	7	006



REVISIONS			
REV	ECO #	DESCRIPTION	DATE
A		RELEASED	9-28-00
B		ADDED MOUNTING HOLE LOCATIONS	3-5-01



NOTES:

1. ADD OR SUBTRACT 5" [127] FOR TRANSVERSE TRAVEL
2. VERTI-Q MOUNTING POINTS MUST WITHSTAND APPROX 100 LBS [45.36 kg] PULL
3. BASE TRACK MUST WITHSTAND 200 LBS [90.72 kg] PULL.
4. QUIET-LIFT MOUNTING POINTS MUST WITHSTAND APPROX 500 LBS [226.8 kg] PULL
5. DIMENSIONS WITHIN [] ARE IN MILLIMETERS.
6. 5" DIMENSION RECOMMENDED, HOWEVER, IF NECESSARY, 3" IS ACCEPTABLE.
7. SPECIFICATIONS SUBJECT TO CHANGE WITHOUT PRIOR NOTICE.
8. QS-550 TUBESTAND WEIGHT: 800lbs; QW-420 VERTI-Q WEIGHT: 225lbs;
QT-750 QUIET-LIFT WEIGHT: 500lbs

PROPRIETARY

THIS DOCUMENT EMBODIES PROPRIETARY RIGHTS OF QMI LLC. IT IS FURNISHED FOR REFERENCE ONLY. ALL OTHER USE IS PROHIBITED.

DRAWN BY DON WHITE	DATE 9-28-00	Quantum Medical Imaging, LLC	
CHECKED BY			
ENG APPROVAL		TITLE Q-RAD SYSTEM	
QA APPROVAL			
MFG APPROVAL		MODEL NOS QS-550; QT-750; QW-420	DWG/PART NO DC80-005
MFG APPROVAL		SCALE NOT TO SCALE	DWG CAT DOCUMENTATION
		SHEET 1 OF 1	

NOTE:

"NOT TO SCALE" IS FOR PRINTING PURPOSES ONLY
DRAWING IS ACTUALLY FULL SIZE.