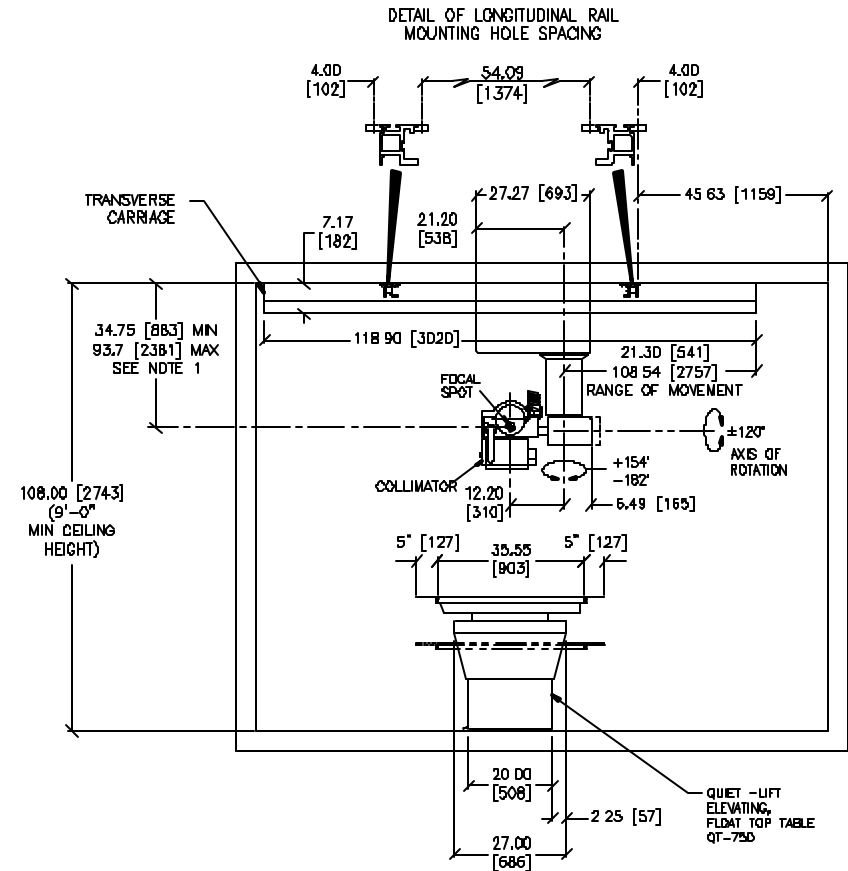
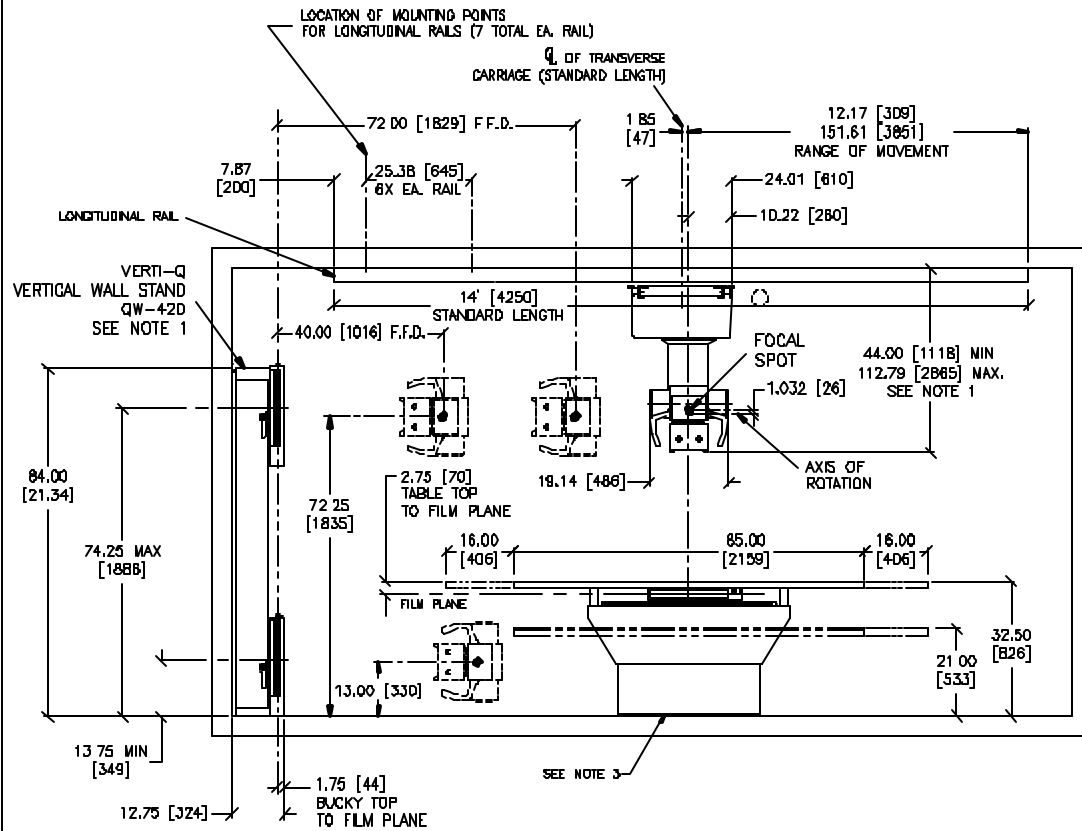


REVISIONS				
REV	ECO	DESCRIPTION	DATE	DRN BY.
B	N/A	MODIFIED DIMENSIONS	1-5-01	DW
C	N/A	150 LBS PULL WAS 100 LBS PULL (NOTE 1)	7-10-01	DW



PROPRIETARY

THIS DOCUMENT EMBODIES PROPRIETARY RIGHTS OF QMI LLC. IT IS FURNISHED FOR REFERENCE ONLY. ALL OTHER USE IS PROHIBITED.

NOTES:

1. VERTI-Q MOUNTING POINTS MUST WITHSTAND APPROX. 150 LBS [68.04 kg] PULL.
2. CEILING MUST BE CAPABLE OF SUPPORTING A 1000 LB [453.6 kg] DYNAMIC LOAD.
3. QUIET-LIFT MOUNTING POINTS MUST WITHSTAND APPROX. 500 LBS [226.8 kg] PULL.
4. DIMENSIONS WITHIN [] ARE IN MILLIMETERS.
5. SPECIFICATIONS ARE SUBJECT TO CHANGE WITHOUT PRIOR NOTICE

DRAWN BY DGN WHITE	DATE 1-5-01	Quantum Medical Imaging, LLC		
CHECKED BY				
ENG APPROVAL		TITLE Q-RAD CS-1 SYSTEM		
QA APPROVAL		MODEL NOS. QS-580; QT-750; QW-420	DWG/PART NO DC80-006	REV C
MFG APPROVAL		SCALE NOT TO SCALE DWG CAT DOCUMENTATION		SHEET 1 OF 1